

VANTRUE

# Sonnet 1 Pro Max

**S1 Pro Max**

USER MANUAL **V1.4**



vantrue.com

truly driven.



Contact Us



Join Our Community



*Instagram*  
[instagram.com/vantrue\\_official/](https://www.instagram.com/vantrue_official/)



**LINE**  
ID: @860fmbxk

# CONTENTS

<b>01</b>	What's in the box?	1
<b>02</b>	Camera Overview	3
<b>03</b>	Installation	7
<b>04</b>	Basic Operation	18
<b>05</b>	Specifications	51
<b>06</b>	Safety Warnings	53
<b>07</b>	Warranty & Support	55

## Warm Tips:

- Before using the camera for the first time, please read the product manual carefully to ensure correct operation.
- The dash cam needs to be connected to the power supply to work properly.
- To ensure driving safety, please do not operate the device or watch the driving video via cell phone while driving.
- This product needs to be inserted into the micro SD card. Please make sure the micro SD card is functioning properly and is compatible with the device.
- Please do not disassemble or repair the dash cam without authorization. If the camera malfunctions, please contact VANTRUE's official customer service.
- Please avoid installing the dash cam in a position that will block the driver's view.
- Please keep away from high temperatures and humid environments to ensure the normal operation of the device.
- To improve the product experience, the product firmware will be updated from time to time, you can download the latest version to enjoy the latest features as needed.
- Please do not install the dash cam in front of the passenger to avoid safety hazards caused by the device falling off.
- Please note that the use of wireless CarPlay or Android Auto may affect the connection of the app.
- Please use this product reasonably in compliance with relevant laws and regulations.

## 1. What's in the Box?



**A. Vantrue S1 PRO  
Max Dash Cam**



**B. GPS Mount**



**C. Car Charger  
with Built-in  
Type-C Cable  
(11.5ft)**



**D. Type-C USB  
Data Cable(3.3ft)**



**E. Warning  
Stickers\*2**



**F. Electrostatic  
Stickers\*2**



**G. Cable Clip**



**H. Crowbar**



**I. Dust-Free Cloth**



**J. Adhesive  
Stickers\*2**



**K. Quick User  
Guide**



**L. Vantrue  
Intelligence  
Functions User  
Manual**

## Optional Accessories (Buy Separately)



**M.** RC11 Rear Camera (Optional)



**N.** RC09 Rear Camera (Optional)



**O.** RC18 Rear Camera (Optional)



**P.** RC08 In-car DMS Lens (Optional)



**Q.** RC17 Rear Camera (Optional)



**R.** Rear Camera Cable (20ft, Optional)



**S.** RC08 Inside Camera Cable (1.96ft, Optional)



**T.** CPL Filter (Optional)



**U.** Wireless Remote Control (Optional)



**V.** Harewire kit (Optional)



**W.** LT01 Modules (Optional)



**X.** LTE Data Cable (Optional)

## Note:

S1Pro Max 1CH: Does not include the rear camera.

S1Pro Max 4k+4k: Includes the RC11 rear camera and rear camera cable (waterproof).

S1 Pro Max 4k+4k: Includes the RC17 rear camera and rear camera cable (non-waterproof).

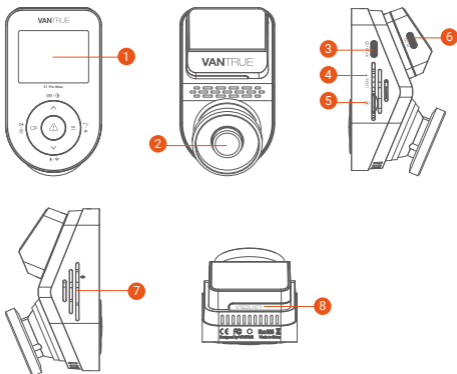
S1 Pro Max 4k+1440P: Includes RC09 rear camera and rear camera cable (waterproof);

S1 Pro Max 4k+1440P: Includes RC18 rear camera and rear camera cable (non-waterproof).

RC08 in-car DMS camera compatibility: Single-channel models support the RC08 camera; Dual-channel models require selecting either the DMS camera or the rear camera for configuration, depending on the use case.

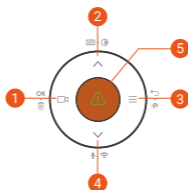
## 2. Camera Overview




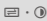
### 2.1 Camera Overview



- 1 2" IPS Screen
- 2 S1 Pro Max Front-Facing Camera
- 3 TYPE-C Port for Connecting Rear Camera Cable or Transferring Data
- 4 Reset Button
- 5 MicroSD Card Slot
- 6 Type-C USB Port on Mount
- 7 Microphone
- 8 Serial Number (Stick in the middle of the screw position at the bottom)

## Buttons and Functions



No.	Buttons	Instruction
1	 OK · 	During video recording, short press to start/stop recording; In menu settings, short press to confirm the action; In playback mode, short press to play/pause the file;
2	 	During video recording, short press to switch the video window; long press to turn off the screen;

In menu settings and file browsing, short press to display the previous option, long press to scroll up to display options;  
In playback mode, short press to fast forward;

3



In the recording mode, long press to turn on/of parking mode;  
In menu settings and file browsing, short press to return to the previous interface;

4



During video recording, long press to turn on/off WiFi, and short press to turn on/off the microphone;  
In menu settings and file browsing, short press to display the next option, and long press to scroll down to display options;  
In playback mode, short press to pop up the delete file menu;

5



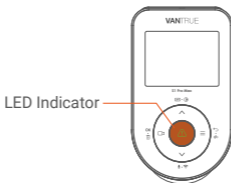
In power-on status, long press to turn off the dash cam;  
In power-off status, short press to turn on the dash cam;  
In the video recording interface, short press to enter emergency recording, short press again to capture the picture; in WiFi mode, short press can also capture the picture;  
In playback mode, short press to pop up the delete Menu;  
Enter Menu: Short Press to Confirm

6



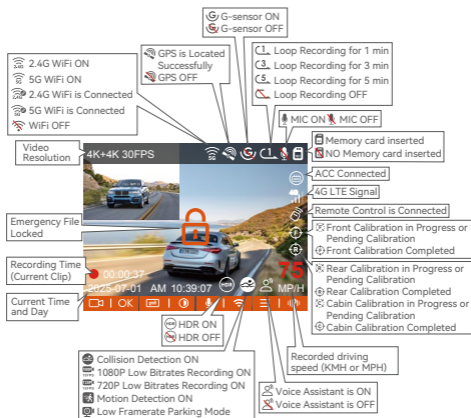
Short press to restart the camera

## LED Indicator



LED Status	Description
Steady green light	In standby status
Blinking green light	Camera is recording

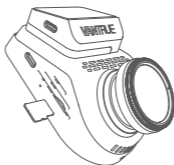
## Screen Overview



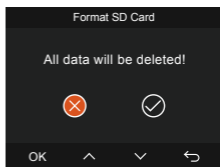
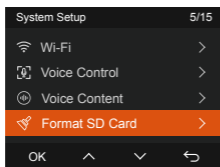
### 3. Installation

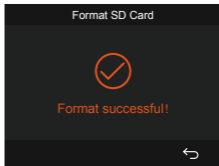
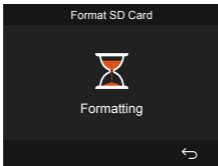
#### 3.1 Installing a Memory Card (Recommend Vantrue U3 high-speed microSD card).

Please insert a memory card (memory card capacity: 32GB-1TB, card speed: U3/Class10/A2, recommend Vantrue U3 microSD card) into the card slot according to the direction indicated in the below picture, until a "click" sound is heard in the card slot, indicating that the memory card is inserted correctly.



After inserting the memory card, if the screen prompts "Card error, please format", please directly press the ≡ button to enter the menu, then go to 'system setup' and choose 'format' to start the formatting process.





### Note:

- The dash cam has specific requirements on the card speed of the memory card. For reliable operation, please use memory card speed: U3/Class10/A2, we recommend using a VANTRUE SD card(sold separately).
- The microSD card should be formatted once a month to maximize the lifetime of the memory card.
- Please do not take the card out when the camera is recording in case the important video file missing.

## 3.2 Dash Cam Installation

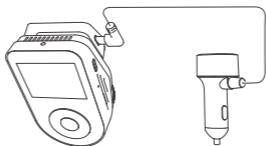
### (1) Installation of Camera Mount

Align the mount with the dash cam mount interface then push in until the mount is installed.



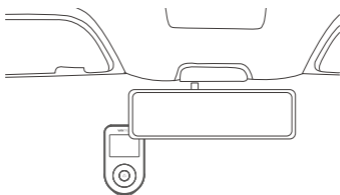
## (2) Car Charger Installation

Connect one end of the car charger to the car cigarette lighter and the other end to the Type C port on the front camera mount. Start the ignition, waiting for the dash cam to start.



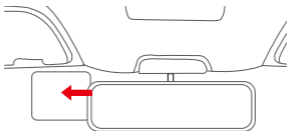
## (3) Power On Dash Cam, Select the Installation Position

Before installation, please power on the dash cam and check whether the shooting angle of the front and rear lens is appropriate through the recording view.

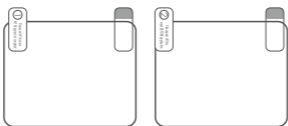


## (4) Installing the Electrostatic Stickers

Thoroughly clean the windshield with water or alcohol, then wipe it with a dry cloth. Stick the electrostatic sticker next to the rear-view mirror, which is the recommended position to prevent blocking your view while driving.

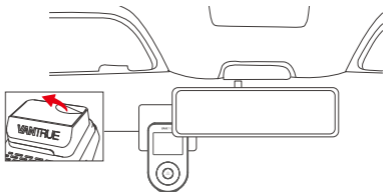


**Note:** The electrostatic stickers come with a two-sided protective film. Please remove the protective film from No. 1, paste the electrostatic sticker on the windshield, and then remove the protective film from No.2.



#### (5) Installing the Front Camera

Remove the protective film from the mount, then fix the mount and camera on the electrostatic stickers.



## (6) Rear Camera Installation (Optional)

When installing the rear camera, ensure the S1 Pro Max dash cam is powered on. First, use the main unit's display to determine the mounting position, then firmly fix the rear camera to the rear windshield as illustrated.



RC11 rear camera installation method (optional)



RC09 rear camera installation method (optional)



RC18 rear camera installation method (optional)



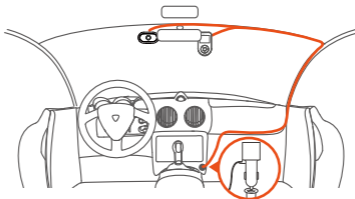
RC17 rear camera installation method (optional)

**Note:**

- Please clean the lens with the dust-free cloth provided by VANTRUE.

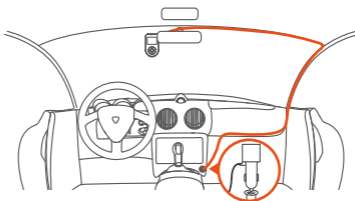
**(7) Install DMS Camera (Optional)**

Install it directly in front of the steering wheel (refer to the diagram for placement). For detailed installation steps, scan the QR code for the "VANTRUE Intelligent User Manual."

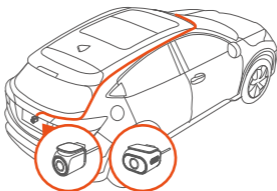
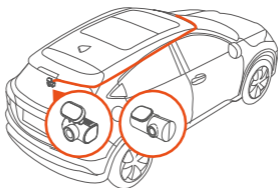


**(8) Wire Storage**

Car Charger Cable: Use the crowbar to stuff the car charger cable under the rubber seal of the A-pillar and windshield.



**Rear Camera Cable (optional):** Carefully store the rear camera cable in the direction shown in the picture.



### 3.3 APP Download

Please scan the QR code for the relevant version below to download the app and install it.

Search for the "Vantrue" app in the App Store or Google Play Store to find the app and then download and install it on your phone.

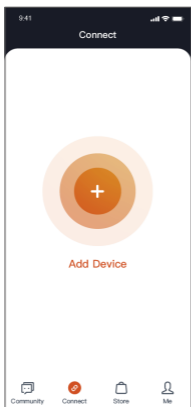


**Note:** This product supports the following functions via a WiFi connection to a smartphone: real-time preview, change camera settings, file downloads without an internet connection, and video playback directly on your phone. However, GPS track playback and video sharing require an active internet connection or cellular data service (you must disable the dash cam's WiFi connection to use these features).

### 3.4 WiFi Connection

The S1 Pro Max dash cam automatically enables its WiFi upon startup. If the WiFi is disabled, you can reactivate it via the shortcut key, voice command, or system menu.

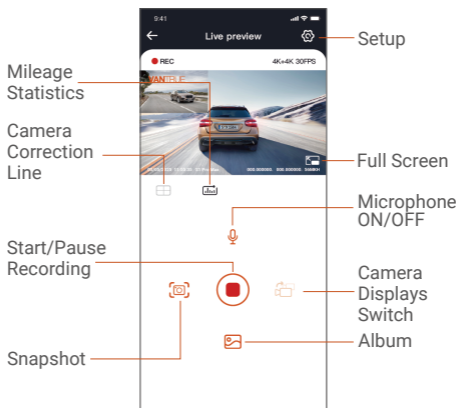
After the S1 Pro Max camera's Wi-Fi is turned on, click "Add Device" on the Vantrue App, select Sonnet Series, choose S1 Pro Max model, confirm the corresponding Wi-Fi name, and finally click to confirm the Wi-Fi connection.



### Note:

- Please check whether the Wi-Fi function of your phone is turned on first.
- The initial password for this device is only used for initial login. To prevent potential security risks, please be sure to change the initial password after the initial login to prevent others from logging into your device without authorization or other adverse consequences.
- If you forget the password you set, you can go to the camera's "System Settings" and choose Restore Default Settings. After the camera restores the default settings, the Wi-Fi password is the initial password (12345678). Please note that the camera's Wi-Fi password can only be changed via the Vantrve app.

## 3.5 APP Operation



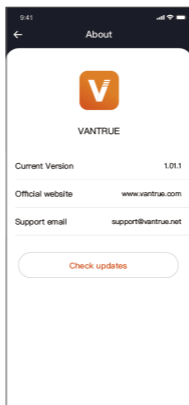
After entering the APP real-time preview, you can do the following operations.

- ① **Video Preview**: After the APP connects to the camera successfully, the camera enters the real-time preview page, click the full screen button or cell phone horizontal playback, the real-time screen automatically switches to full screen preview mode. Click the window switch button to switch the front and rear video windows, but only multi-channel recording mode can use this function.
- ② **Playback Video**: You can view the recorded video or photo files in the Micro SD card in the APP, click "File" and then select the video to play back.

- ③ Video Download: You can choose to download videos or pictures in the Micro SD card browse file interface or in the video playback. After downloading the video, you can play it in the App local file and view the GPS track of the video.
- ④ Picture Capture: In the application's live preview screen, you can capture the current picture.
- ⑤ Mileage Statistics: Users can click to download the mileage information according to their needs. The mileage information will be saved in the APP as a picture or PDF file.
- ⑥ Camera Correction Line: The lens balance is corrected by the accurate cross line, so that the recording image will not be skewed.

## 3.6 APP Upgrade

Open "Vantrue" APP, click "Me > About > Check Updates", then the APP will automatically detect if the current APP version is the latest version. If there is a new version of the APP, please operate as per the prompts and upgrade the version.

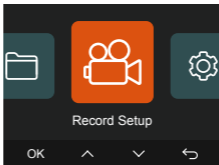


## 4. Basic Operation

### 4.1 Menu Settings

The S1 PRO Max dash cam has 4 function menus, which are: Record Settings, System Settings, Vantrue Intelligent and File Browsing. You can set your dash cam according to your requirements with these function settings.

Press the (📷) button to pause the video first, then press the (☰) button to enter the menu settings.



## (1) Record Setup :

- a. **Resolution:** The S1 PRO Max camera has 3 recording modes:

### Front Mode:

4K 30FPS

2560x1440P 30FPS

1920x1080P 30FPS

1280x720P 30FPS

### Front + Rear Mode:

4K+4K 30FPS

4K+1440P 30FPS

1440P+1440P 30FPS

1440P+1080P 30FPS

1080P+1080P 30FPS

1080P+720P 30FPS

720P+720P 30FPS

### Front + Cabin

4K+1080P 30FPS

1440P+1080P 30FPS

1080P+1080P 30FPS

720P+1080P 30FPS

Note: The resolution specifications will vary depending on the optional camera used and the actual resolution will be determined by the specific lens installed.

- b. **Loop Recording:** The default setting is 1 min. You can choose the options among 1/3/5 min and OFF.

- c. **G-Sensor:** Select the level of G-sensor you need, then you can set 3 directions (Front + Rear/Left + Right/Up + Down). The G-sensor value in each direction can be selected as 1/2/3/4/5/Off. The higher the sensitivity level, the easier it is to trigger event recording. G-sensor is most sensitive when set to 5.
- d. **Audio Recording:** The default setting is on. Set recording to on or off.
- e. **Audio Noise Reduction:** The default setting is on. It adjusts the audio effect of recording by dynamic noise reduction. You can choose to turn it on or off.
- f. **Exposure:** You can set the camera exposure value of the front or rear camera of the car separately. The default is +0.0.
- g. **REC Status Light:** Default setting is ON. You can choose to turn on/off the recording status light.
- h. **HDR:** The default setting is on. You can adjust the HDR on or off of the front and rear cameras separately.
- i. **HDR Timer:** The default is off. After turning it on, you can select the automatic start time and close time.
- j. **PlatePix™ Timer:** The default is off. You can choose to automatically start and stop the time after turning it on
- k. **Rotate Display:** Default is off. You can choose to flip the rear screen up and down (180 degrees).
- l. **Rear Mirror:** The default is ON. If you turn it on, the rear recording screen will be displayed in mirror mode.
- m. **Number Plate:** Select the number or letter to be set. After setting, your license plate number can be displayed in the recorded video.

- n. **Stamp:** Enable or disable the watermark stamp on videos and photos. The watermark stamp includes time and date label, VANTRUE label, license plate number, GPS location information, and speed label. All are enabled by default.
- o. **Time Lapse:** The default value is disabled. You can choose to enable 1FPS/5FPS/10FPS/15FPS
- p. **Parking Mode:** You can choose the parking mode you need, including Collision Detection/Motion Detection/Low Bitrate Recording/Low Framerate Mode/OFF, the default is OFF.
- q. **Parking Mode Settings**
  - Detection Lens Position: The default is front + rear. You can choose front+rear or front.
  - Parking Low-light Night Vision: The default is on. Set recording to on or off.
  - Parking Collision Detection: The default is quick start mode. You can choose power saving mode and quick start mode.
  - Motion Detection Area: The default is full screen. You can choose Front area detection, Rear area detection, or full screen.
- r. **LTE Settings**
  - Notification Push: The default is off. You can choose real-time/3 minutes delay or off.
  - SIM card Upload Daily Traffic Control: The default is OFF. You can choose among 100MB/200MB/300MB/500MB/800MB/1000MB/off.
  - Collision Video Upload: The default is Save Traffic Upload. You can choose between Off, original video upload, and original video upload.
- s. **Fatigue Driving Alert:** The default is off. You can choose between 2H/3H/4H/5H/6H/off, when exceeding a certain set time, the voice will remind the user to take a rest.

- t. **Speeding Alert:** The default is off. You can choose 120KM/H, 110KM/H, 100KM/H, or off. when exceeding a certain set speed, the voice will remind the user to slow down.
- u. **Mileage Statistics:** The default is on, and the GPS mileage information will be stored in the memory card, you can view it on the computer or export the file through the mileage statistics function in the APP.
- v. **Hud Speed and Time:** The default setting is Off. It can be set to enter after 1/3/5 minutes, and the current speed and time will be displayed after entering.
- w. **GPS Settings:** GPS is enabled by default. GPS ON/OFF settings, speed unit settings, and GPS information are all set here.

## (2) Vantrue Intelligent

- a. **Vantrue Intelligent:** The default setting is on. You can choose to turn it off according to their needs. If you choose to turn it off, the following functions will not be available.
- b. **ADAS(Front Camera):** It supports Forward Collision Warning, Pedestrian Collision, Lane Departure, Forward Vehicle Departure, and Virtual Bumper. You can choose to turn it on or off, the sensitivity is medium, and the default activation speed is adjustable.
- c. **BSD(Rear Camera):** It supports Lane Change Assist Warning and Rear Collision Warning. You can choose to turn it on or off, the sensitivity is medium, and the default activation speed is adjustable.
- d. **DMS(Cabin Camera):** It supports Smoking Detection, Phone Call Detection, Distraction Detection, Fatigue Detection, Driver Detection, and

Steering Wheel position (default left). You can choose to turn it on or off, the sensitivity is medium.

- e. **Intelligent View Display:** The default is off, you can choose the options among 1 minute/3 minutes/5 minutes, or off.
- f. **AI Frame Display:** The default is on, you turn it on or off according to your needs.
- g. **Voice Reminder:** language reminder sensitivity level, respectively off/1/2/3/4/5/, default 5.

**Note:** For specific function descriptions, please scan the "Vantrue Intelligence Function Manual" QR code on the card, as shown in the figure below.



### (3) System Setup:

- a. **Language:** Available languages are English/Français/Español /Deutsch/ Italiano/简体中文/русский/日本語/PolSKI/한국어/Türkçe/Čeština.
- b. **Wi-Fi:** You can choose Wi-Fi mode, view Wi-Fi information, etc.  
The Wi-Fi auto-on option means that the Wi-Fi will automatically turn off after 10 minutes of turning on. If you choose on, Wi-Fi will always stay on; if you choose off, Wi-Fi needs to be turned on manually.  
Wi-Fi mode is 5G by default.  
Wi-Fi information displays the Wi-Fi name and Wi-Fi password.

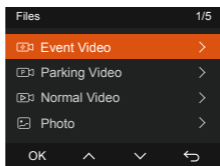
- c. **Voice Control:** The default sensitivity is Standard. Voice commands can be recognized after the option is turned on. You can choose options such as low sensitivity/high sensitivity/standard/off.
- d. **Voice Content:** Voice recognition commands. You can use different commands to remote control the camera to work.
- e. **Format Memory Card:** Format all data on the memory card.
- f. **Format Reminder Setup:** you can select the reminder options: 15 Days, 1 Month, and Off. The default is off. When the time is up, you can choose "OK" to format, or choose "Next" to recalculate.
- g. **Time & Date:** There are two ways to set the time and date:
  - ① GPS auto update: GPS will update the time automatically when it is turned on by default. GPS auto update date and time is based on the time zone where you set, so you need to choose the correct time zone first;
  - ② Manual set date/time: Turn off GPS auto update and set date and time manually.  
Summer/Winter time auto switch: The default setting is off. When turned on, it will switch automatically according to the daylight saving time and winter time dates.

\*This feature is only available in North America, if used in other regions, it may cause time errors. The date format and time zone settings are also set in this menu.

- h. Auto LCD Off:** Set the time to automatically turn off the LCD after no operation.  
If you set the Auto LCD Off to 3 min, the camera's LCD screen will auto light off after 3 min but the recording will continue. If the setup is Off, the screen will not turn off. You can choose the options among the 30s, 1Min, 3Min, and OFF.
- i. LCD Brightness:** The default is automatic mode; In automatic mode, after 10 minutes of unmanned operation of the recorder, the screen brightness decreases by 50%; It can be set to three different levels of brightness: high, medium, and low.
- j. Device Sound:** Set the volume of the device. The default volume level is 2, the lowest is 0, and the highest is 5.
- k. Warning Tone:** According to different situations, the dash cam is set with 5 kinds of prompt tones, which are power-on/off sound, keys sound, file locked sound, format sound, and abnormal stop recording reminder. All prompt tones are turned on by default.
- l. Frequency:** Different countries have different frequencies. In order to avoid affecting the video, you can choose 50Hz or 60Hz frequency according to different regions.
- m. System Info:** Check the current model, firmware version, and the Vantrue official website.
- n. Certifications:** You can view the certification information of the S1 PRO Max camera.
- o. Default Settings:** Reset the device back to factory settings.

#### (4) Files:

Review the video and photo files recorded by the camera.



- a. **Event:** Critical event videos detected by G-Sensor activity or manually locked by user.  
20301201\_140633\_00008\_E\_A.MP4  
20301201\_140633\_00008\_E\_B.MP4
- b. **Normal:** Standard videos recorded. This folder saves loop recording video, privacy Files and time-lapse video.  
The file name format of Loop Recording video is:  
20301201\_140933\_00008\_N\_A.MP4;  
The file name format of Time-Lapse video is:  
20301201\_140733\_00006\_T\_A.MP4;  
The file name format of privacy Mode video is:  
20301201\_140733\_00006\_T\_A.MP4;
- c. **Files in Parking Mode:** This folder saves parking mode videos.  
The file name format of Parking mode video is:  
20301201\_140833\_00002\_P\_A.MP4

- d. **Photo:** Photos files. The pictures captured and collided in normal video recording mode are: N (Photo), and the pictures captured in parking monitoring mode are: P (Photo).

The file name format of Photo: is:

20210128\_140633\_00001\_N\_A.JPG

20210128\_140633\_00001\_P\_A.JPG

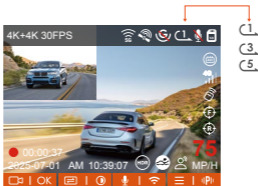
- e. **All Files:** All the videos and photos recorded.

Note: The suffix A represents the files recorded by the Front camera, the suffix B represents the files recorded by the Rear camera.

## 4.2 Key Features

### (1) Loop Recording



After inserting the memory card and connecting the power, the dash cam will automatically turn on and enter loop recording. The duration of each recorded video will be saved based on the loop recording time you set, and saved in the normal video folder. When the capacity of the normal video folder reaches 70% of the total capacity, the new loop recording file will automatically overwrite the original loop recording files.

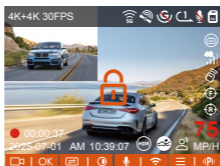


## Note:

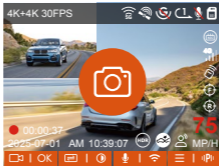
- The normal operation of the loop recording function is very dependent on the speed of the memory card, so please format the memory card regularly to avoid problems such as excessive memory card files and card aging that affect the normal loop recording.
- Please check the loop recording video regularly to avoid the necessary videos being overwritten by the loop.
- When Loop Recording is turned off, the video lock function will no longer work.
- After the loop recording is turned off, the duration of each video will be 20 mins, and the recording will stop when the memory card capacity is full.

## (2) Event Recording

Event video is triggered by the G-sensor (Gravity Sensor), which can be automatically triggered or manually locked. During driving, in case of special circumstances, the camera will automatically lock for event recording or you can manually lock it by pressing the  button for event recording. During the lock video period, you can press  the button to capture multiple times. After recording, the video will be automatically saved in the event video folder, and the photo will be saved in the photo folder.



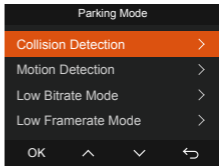
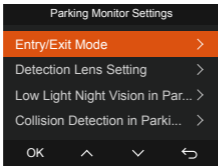
Automatic locking event video is triggered when the car is hit/shaken. The dash cam detects the vibration and automatically locks the current video, which is saved in the event video folder.



- The sensitivity of the automatic locking video trigger is determined by the sensitivity of the collision. The higher the sensitivity setting, the greater the probability of being triggered.
- The total capacity of the event video file accounts for 30% of the total capacity of the current memory card. When the event video file reaches the upper limit, the new event video file will automatically overwrite the old event video file. It is recommended to periodically check and save your event video files to avoid loss.
- Lock recording will not trigger in either of the following situations: Loop recording is off or Time lapse recording is on. You can only capture photos with loop recording off/ time lapse on.

### (3) Parking Mode

When parking, you can set up a variety of different parking monitoring settings on your own, depending on the vehicle itself, the parking environment, your own needs, and other factors.



## Parking Mode Activation/Deactivation Methods:

### 1. Auto Mode (Default)

Without ACC (G-Sensor Mode): Enters automatically after 5 minutes of vehicle inactivity; exits automatically upon secondary collision detected by G-Sensor.

With ACC connected: Enters automatically when the vehicle is turned off (ACC OFF); exits automatically when the vehicle is started (ACC ON).

### 2. ACC Mode

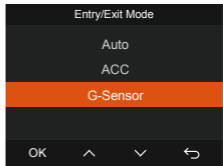
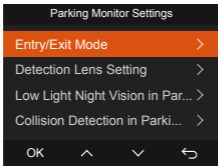
Enters automatically when the vehicle is turned off (ACC OFF); exits automatically when the vehicle is started (ACC ON). Requires proper wiring via an ACC hardwire kit cable.

### 3. G-Sensor Mode

Enters automatically after 5 minutes of vehicle inactivity; exits automatically when the G-Sensor detects a secondary collision.

### 4. Manual Mode

Press and hold the shortcut button to enter; press any button to exit.



Please note the following precautions when using the parking mode:

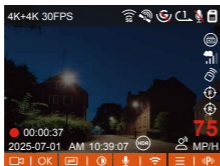
- ① To ensure that the dash camera can use the parking mode function normally, please use the VANTRUE hardwire kit cable or other stable and continuous power supply for the camera.
- ② It is recommended to use VANTRUE ACC hardwire kit cable. If you use other brands of ACC hardwire kit cable, you may not be able to use the ACC function due to the different location of the ACC detection PIN pin.
- ③ In the hot and sunny environment of summer, we recommend you to choose the parking mode of collision detection. When the ambient temperature in the car reaches 60°C, we recommend you turn off the camera to avoid the camera working abnormally due to the high temperature.
- ④ Time-lapse recording and parking mode (including collision detection, motion detection, low bit rate recording, and low frame rate mode) can only be turned on one of the two. If one of them is turned on, the other one will be turned off automatically.
- ⑤ All the files recorded in parking mode will be saved in the parking video folder, to avoid the parking mode files being overwritten by the loop, please check them regularly to avoid losing them.
- ⑥ The parking mode function will be improved with the firmware upgrade of the S1 Pro Max dash camera. Please pay attention to the firmware

description announcement on VANTRUE website for specific changes, or consult with customer service staff.

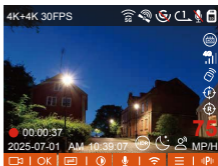
## Low Light Night Vision in Parking Mode

In order to enhance the safety of parking at night, we make full use of the lens performance combined with the low light Night Vision technology to improve the night vision effect in parking mode.

This feature is on by default and will only be triggered when entering parking mode, and will not affect normal recording.




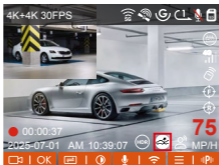
Low-light Night Vision Off



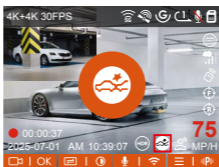
Low-light Night Vision On

## Collision Detection

When the Collision Detection setting is on, the  icon will be displayed in the recording interface, indicating that the recorder is currently using the Collision Detection mode. The sensitivity of the Collision Detection value can be selected as 1/2/3/4/5. The higher the sensitivity level, the easier it is to trigger Event recording. Collision Detection is most sensitive when set to 5.



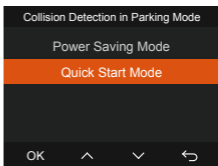
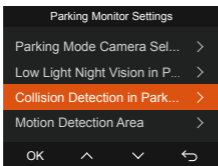
After entering the collision detection mode, once the dash cam detects a collision, it will trigger the recording for 30 seconds and save the file in the parking video folder. You can watch the video back via the APP or the computer Vantrue player.



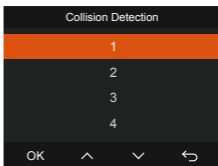
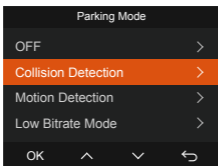
**Note:** If the dash cam continues to be hit during the collision detection recording, it will exit the collision detection mode and enter normal recording, restarting the 5-minute entry mechanism.

This function allows you to adjust the startup mode of collision detection. In power saving mode, the dash cam will turn off and then turn on to record after the trigger; in fast start mode, the dash cam will be in standby mode and start recording immediately after the trigger.


**Note:** Power saving mode/quick start mode will only take effect after collision detection is turned on. This function will not take effect if collision detection is turned off or other parking monitoring modes are selected.

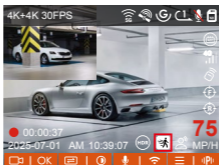


**Collision Detection Sensitivity:** There are 1 to 5 levels of sensitivity that can be adjusted. The larger the number, the higher the sensitivity. You can adjust it according to their habits and the condition of the car.

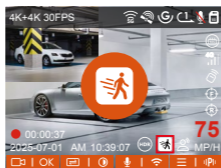



## Motion Detection

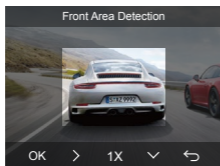
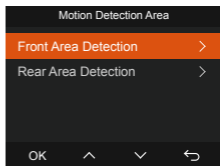
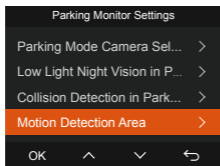
When the motion detection is turned on, the  icon will be displayed on the recording interface, indicating that motion detection has been turned on. Please go to "Motion Detection Area" to set the area range.



After entering the motion detection mode, once an object is found to be moving within the set detection range, the dash cam will be triggered to record video for 30 seconds and retain the 10 seconds of footage before the triggering of the recording together to make up a 40-second motion detection recording video, which will be saved in the Parking Video folder.



To meet the needs of different users, the motion detection function adds motion area selection. Users set the area detection range of the front and rear cameras on the S1 Pro Max recorder and click the  button to adjust the range.

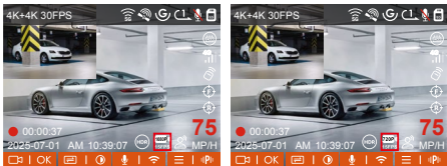


## Note:

Motion detection mode can only be engaged when the camera is turned on. Once the camera is turned off, the motion detection mode will not work.

## Low Bitrate Recording

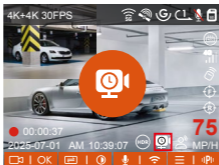
After entering the low bitrate recording mode, the resolution of all cameras will be automatically switched to 1080P 15FPS or 720P 15FPS for recording, and the recording time is 3 minutes, and the file is saved in the parking video folder.



**Note:** Low Bitrate recording can only be engaged when the camera is turned on. Once the camera is turned off, the Low Bitrate recording will not work.

## Low Framerate Mode

When the low framerate mode is selected, the camera will record according to your selection among 1FPS/5FPS/10FP/15FPS. For example, if you select 1FPS and the current video resolution frame rate is 30FPS, the camera will generate a 30FPS video per second. Low framerate mode can greatly preserve the integrity of the video and save space on the memory card.



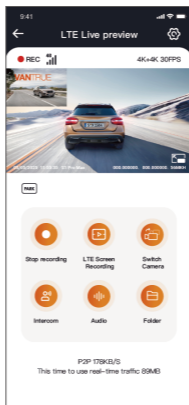
Normal Recording Time = Low Framerate Recording Time (Sec) x Recording Frame Rate FPS/[Low Framerate Option] (Time should be converted into seconds)

**Note:**

- The time unit of the calculation formula is seconds, so the final normal recording time calculated is also in seconds. If you need to convert it into other time units, please check the units and convert them yourself.
- The low framerate mode is the same as the time-lapse recording mode, the former only works when parking, and the latter continues to work after it is turned on.
- In low framerate mode, the camera also needs a stable power supply. Once the power is off or exhausted, the camera will shut down.

#### (4) LTE Settings (must be used with LTE Module)

To facilitate users to remotely check parking conditions, Vantrue has launched an LTE module (LT01). Users can insert a SIM card into the LTE module and connect it to a driving recorder for remote monitoring.



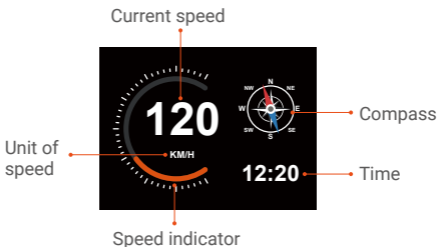
Within the LTE settings, users can customize:

- ① Notification Settings – Manage real-time alerts and system messages.
- ② SIM Card Data Usage Cap – Set monthly data limits to avoid overages.
- ③ Collision Video Upload Quality – Prioritize resolution (e.g., 1080p/720p) for emergency event footage.

Adjust these configurations based on your cellular plan (e.g., unlimited vs. tiered data) to ensure efficient data usage and optimal remote monitoring performance.

## (5) HUD Speed and Time

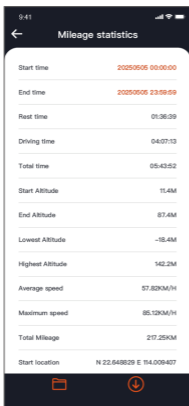
When this function is on and after each successful GPS fix, the camera screen displays the zoomed-in current travel speed, current travel direction and current time.

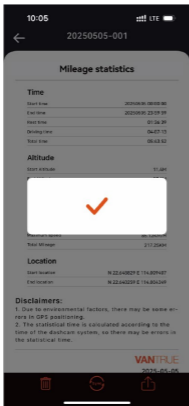


- ① When this feature is turned on at the same time as the screen saver feature, the screen saver feature takes precedence.
- ② When GPS is not successfully located or GPS is not turned on, the device cannot access the HUD speed and time display function.

## (6) Mileage Statistics

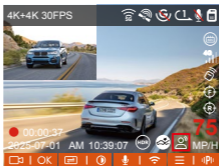
S1 Pro Max dash cam uses GPS information to analyze mileage statistics such as driving time, driving mileage, altitude, driving speed, etc. during the driving process. Mileage files can be exported via the APP. In the APP real-time preview interface, you can select the start time and end time, click OK, then you can download the mileage statistics file in PDF or JPG format and save it in the APP local folder.





## (7) Voice Assistant

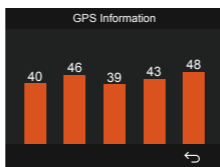
You can also control the camera with voice commands, such as take photo, video start, turn on/off WiFi, lock the video, etc. Currently supported languages are English, Japanese, Russian, and Chinese. For more detailed voice commands, please check System Settings > Voice Content



The default setting is standard sensitivity. Voice recognition has options such as low sensitivity/standard/high sensitivity/off.

## (8) GPS Function

The GPS function is one of the important functions of the dash cam. GPS is enabled by default, and the camera receives GPS signals through the GPS mount. It can automatically calibrate the time and date in your area, recording the location where the video was taken and the speed of the car at the time.

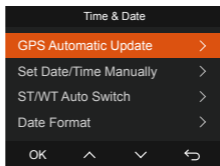


### Note:

- The GPS connection will be completed within 1 minute after you turn on the device. If the GPS connection is not successful within 1 minute, please check whether the device has turned on the GPS function, whether the GPS bracket is properly connected, and whether your environment (underground parking lot, densely populated residential area, subway, tunnel, etc.) is affecting the reception of GPS signal.
- GPS information is recorded along with the video. To view it, please download and install the Vantrue APP and Vantrue GPS Player (available for download at [www.vantrue.net](http://www.vantrue.net)).

## (9) GPS Automatic Update Time& Date

The GPS automatic correction time setting for the S1 PRO dash cam is turned on by default. You can select GMT-08:00 by selecting your time zone, such as Los Angeles. If you do not know the time zone of your location, you can use WiFi to connect to the Vantrue App and confirm that the automatic time adjustment function in the APP is turned on.

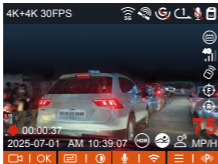


### Note:

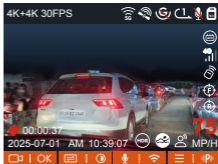
- GPS automatic time correction needs to set the correct time zone, you can refer to the representative cities after each time zone.
- Automatic switching between winter and summer time, this function is only available in North America.

## (10) Video Quality and PlatePix™ Timer

The default video mode is Standard Quality. Users can turn on PlatePix™ mode according to their needs and set the automatic on/off time with the PlatePix™ timer. This mode prioritizes enhancing license plate clarity and reducing blur caused by lighting conditions to ensure reliable evidence in incident scenarios.



PlatePix™ ON




PlatePix™ OFF

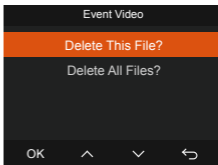
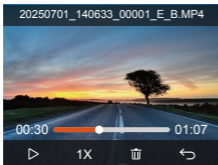
**Note:** While PlatePix™ enhances brightness in the foreground, the overall image may appear darker. In low-light environments, it is recommended to disable or schedule PlatePix™ mode to maintain optimal recording quality.

## (11) Viewing and Deleting Video/Photos


### a. Viewing and Deleting files on the Camera

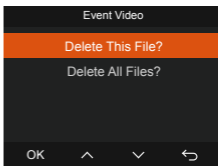
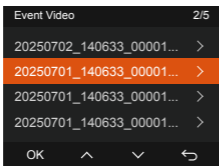
#### • Playback Files

After clicking "Files", enter any folder, and after opening the video folder, you can press  the button to select the next file, and delete the file during playback.



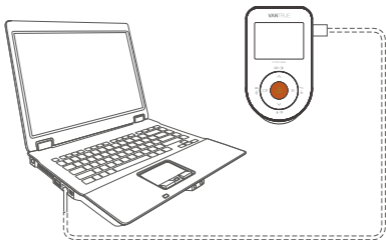
## • Deleting Files


Go to "Files", choose a video on the dash cam, and press  the button in the file browsing interface to pop up the delete Menu.

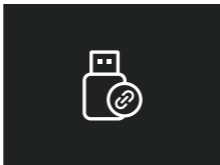


## b. Viewing and Deleting files on Computer

- ① Connect the included TYPE-C USB data cable to the camera and the computer.



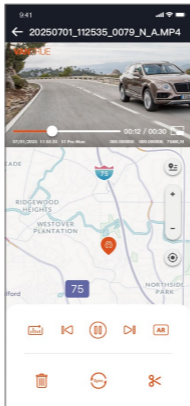
- ② After the connection is successful, the  icon will appear on the display of the camera to transfer data, and then you can view and delete the video files in the computer folder.



- ③ Depending on the computer systems of different users, after the camera is connected to the computer, it will be displayed as a removable drive or a removable folder.
- ④ To view the files on the computer, you can directly access them, right-click to open the menu, and delete them.
- ⑤ You can also use a USB card reader to read the memory card information.
- ⑥ To ensure a stable power supply, please check whether the computer interface is a USB 3.0 interface. When connecting to a desktop computer, it is recommended to use the USB port on the back of the host computer.

### **c. Viewing and Deleting on the “Vantrue” APP**

After the camera is successfully connected to the mobile phone through WiFi, it can play back, download and delete files in the mobile APP.



**Note:**

- For video playback in the APP or downloads to Micro SD card, there will be no network traffic consumption.
- You can view GPS track information only after the video file is downloaded and played back locally. At the same time, you need to disconnect the WIFI of the dash cam, otherwise, the map information will be blank.

**d. View via Vantrue Player**

The Vantrue GPS Player supports video playback, GPS tracking visualization, and real-time speed display, providing users with an enhanced video experience.

## Windows Users:

Download Vantrue Player from the official Vantrue website:

<https://www.vantrue.net/app/app.html>

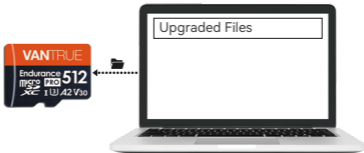
Click Support → Navigate to Download → Select Vantrue Player



## (12) Upgrading Firmware

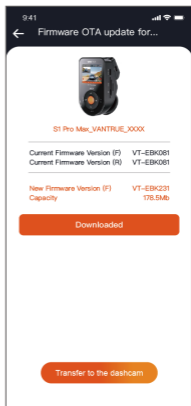
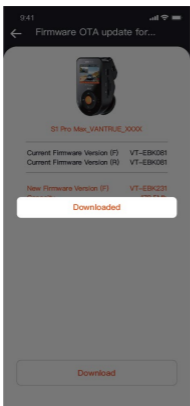
### Option 1: Upgrade via PC

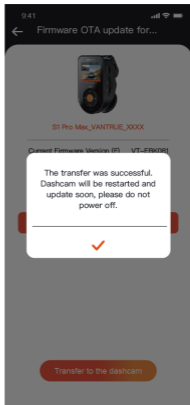
After downloading the latest S1 PRO Max firmware via Vantrue Official Website, place the file into the root directory of the memory card, insert it back into the dash cam, power on to upgrade



### Option 2: OTA(OvertheAir) Firmware Update

After opening the APP, you will receive the firmware update push. Once confirming the upgrade, it will jump to the OTA upgrade interface, which can be upgraded according to the APP guidance. Please note: OTA requires network traffic to download upgrade files.





- ① To upgrade firmware via file or OTA upgrade, S1 Pro Max camera needs to keep power on.
- ② To upgrade via OTA, internet data traffic is required to download the upgrade file.
- ③ If you upgrade the firmware by file, you need to format the memory card on the S1 Pro Max dash camera , and then copy the upgrade file to the memory card to upgrade the firmware.

## 5. Specifications

The specifications of this product may change without prior notice due to product improvements.

Model	S1 PRO Max
Chips	Novatek high-performance processor
Image Sensor	Sony Sensor
G-sensor	Built-in triaxial sensor
WiFi	Built-in 2.4GHz&5GHz
Screen	2" IPS Screen
Camera Angle	Front: 155° wide viewing angle; Rear: 155° wide viewing angle;
Aperture	Front: F/1.8 wide aperture; Rear: F/1.8 wide aperture;
Languages	English/Français/Español/Deutsch/Italiano/简体中文/русский/日本/PolSKI/한국어/язык/Türkçe/Čeština
Video Resolution Note: The resolution specifications will vary depending on the optional camera used and the actual resolution will be determined by the specific lens installed	Front: 4K 30FPS Front+Rear: RC11/RC17 : 4K+4K 30FPS RC09/RC18: 4K+1440P 30FPS Front + Cabin RC08: 4K+1080P 30FPS
Video File Format	MP4
Picture File Format	JPEG

Audio	Built-in microphone and speaker
Memory Storage	External: 32GB-1TB Micro SD Card, U3, Class 10(not included in the package)
USB Port	Type C
Power Source	Built-in super capacitor
Supply voltage current	DC 5V 2.4A
Power	6W
Working Temperature	-4°F to 140°F(-20°C to 60°C)
Storage Temperature	-4°F to 158°F(-20°C to 70°C)

## 6. Safety Warnings

- This product is an auxiliary device for the purpose of recording exterior images of vehicles, and some functions may not be supported due to different driving and vehicle environments.
- Firmware upgrades will be carried out from time to time to further improve the product, please pay attention to the official notice of VANTRUE according to the specific upgrade.
- This product can record and save images of vehicle accidents, but it does not guarantee that all accident images can be recorded. The image may not be recorded in a special folder because the crash sensor cannot be activated for minor crashes.
- Be sure to turn off the power when inserting or removing the memory card.
- For stable use of the product, please format the memory card at least once a month.
- Generally, memory cards have a life span, and long-term use of memory cards may result in data not being saved. In this case, it is recommended to purchase a new memory card for use. If the data is destroyed due to the long-term use of the memory card, the company will not be held responsible.
- Do not install or operate this product while the vehicle is running.
- Do not subject the product to strong shocks or vibrations, which may damage the product and cause malfunction or inoperability.
- Do not use chemical solvents or cleaning agents to clean the product.
- The ambient temperature range for normal use of this device is -20 degrees Celsius to 60 degrees Celsius. Exceeding this ambient temperature range may cause the product to malfunction.

- Do not place the product in an open flame. Do not use the product in high temperature and high humidity areas, as this may cause electric shock, short circuit, and other hazards and damage the product.
- It is forbidden to disassemble or modify the car charger by yourself or use a short-circuit car charger, otherwise, it will cause personal injury, electric shock, fire, and other dangers or damage to the product.
- Please do not disassemble or modify the product without permission to avoid damaging the recorder, generating heat, and causing fire.
- Please use this product within the scope of the law.

## **7. Warranty & Support**

### **Warranty**

The VANTRUE® S1 PRO Max Dash Cam comes with a full 12 months warranty. If you register your product on our official site ([www.vantrue.net/register](http://www.vantrue.net/register)), you can extend the warranty to 18 months.

### **Support**

If you have any questions regarding your product, please solve it in the following ways: 1. Open Vantrue APP, find the solutions in the frequently asked questions; 2. Contact customer service of your purchased channel; 3. Drops us an email at [support@vantrue.net](mailto:support@vantrue.net). Queries are typically answered within 12-24 hours.

### **Your opinion matters**

VANTRUE® is firmly committed to always improving our products, services, and user experience. If you have any thoughts on how we can do even better, we welcome your constructive feedback and suggestions.

If you need the full version of user manual, please download on our official site, or connect with us today at [support@vantrue.net](mailto:support@vantrue.net).

**Thank You for choosing Vantrue**

**VANTRUE**  
truly driven.



CE



IC



FC

✓  
RoHS



[www.vantrue.com](http://www.vantrue.com)

Made in China